

1-20-2007

CONTENTdm success stories for digital collection management

Nadia Nasr

Santa Clara University, nnasr@scu.edu

Follow this and additional works at: <http://scholarcommons.scu.edu/library>



Part of the [Library and Information Science Commons](#)

Recommended Citation

Nasr, Nadia, "CONTENTdm success stories for digital collection management" (2007). *University Library*. Paper 127.
<http://scholarcommons.scu.edu/library/127>

Presentation delivered at CONTENTdm session of ALA Midwinter meeting, Seattle, WA.

This Presentation is brought to you for free and open access by the Information Services at Scholar Commons. It has been accepted for inclusion in University Library by an authorized administrator of Scholar Commons. For more information, please contact rscroggin@scu.edu.

Maryland Digital Cultural Heritage

CONTENTdm Success Stories for
Digital Collection Management

ALA Midwinter, Seattle, WA

January 20, 2007





About Me : Coordinating Projects

2005–Present

2002–2005



Civil Rights in
Mississippi
Digital Archive



The University of Southern Mississippi

McCain Library &
Archives @ USM



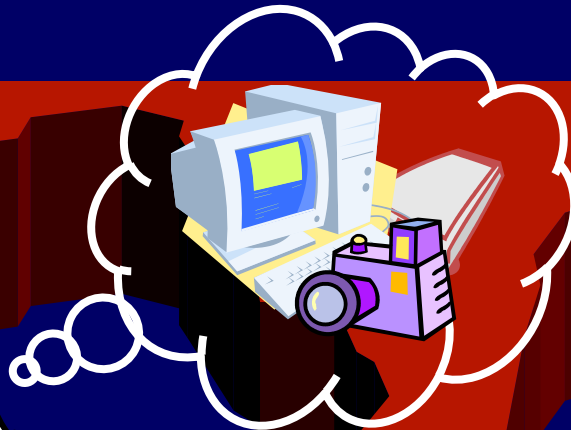
EPFL / MDCH





What is MDCH?

:Statewide Collaboration

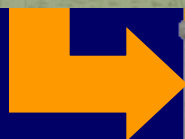


The MDCH Program is a statewide, collaborative digitization program.



What is MDCH?

:Headquarters

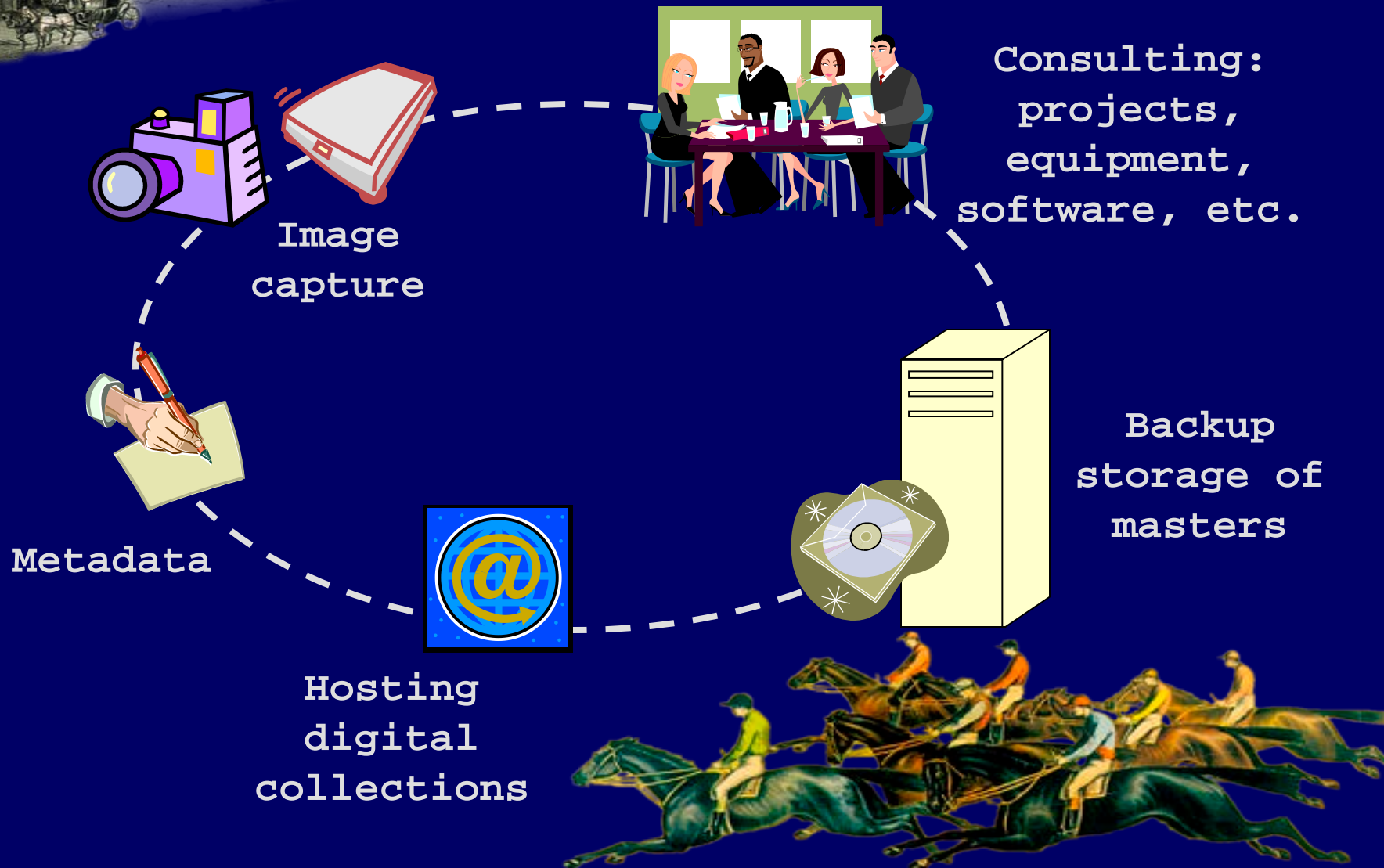


The MDCH
Program is
headquartered
at the EPFL Central
Library/SLRC.



What is MDCH?

:Facilitating Digitization





What is MDCH?

:Partners in Collaboration

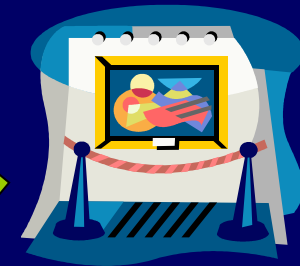
Historical
Societies



Public, Academic,
& Special Libraries



Museums



Private
Donors



Statewide Collaboration :Distributed Workload



Western Maryland
(3 counties)



EPFL Central
Library / SLRC
(10 counties)

Eastern Shore
(8 counties)

Southern Maryland
(3 counties)



Digitization centers @
Regional Libraries.





Audience

:For Collections and Exhibits

Primary Audience:

General Public



Focus:

Promoting Research,
Education, & Tourism

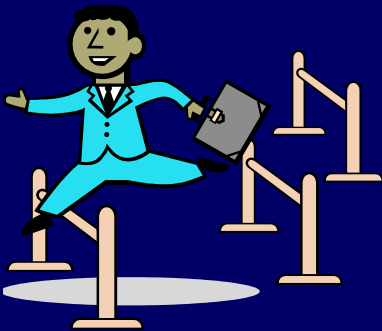




Challenges

:Obstacles to Success

- Homegrown Database
- Internal/External Structure
- Limited Staff
- Marketing/Outreach





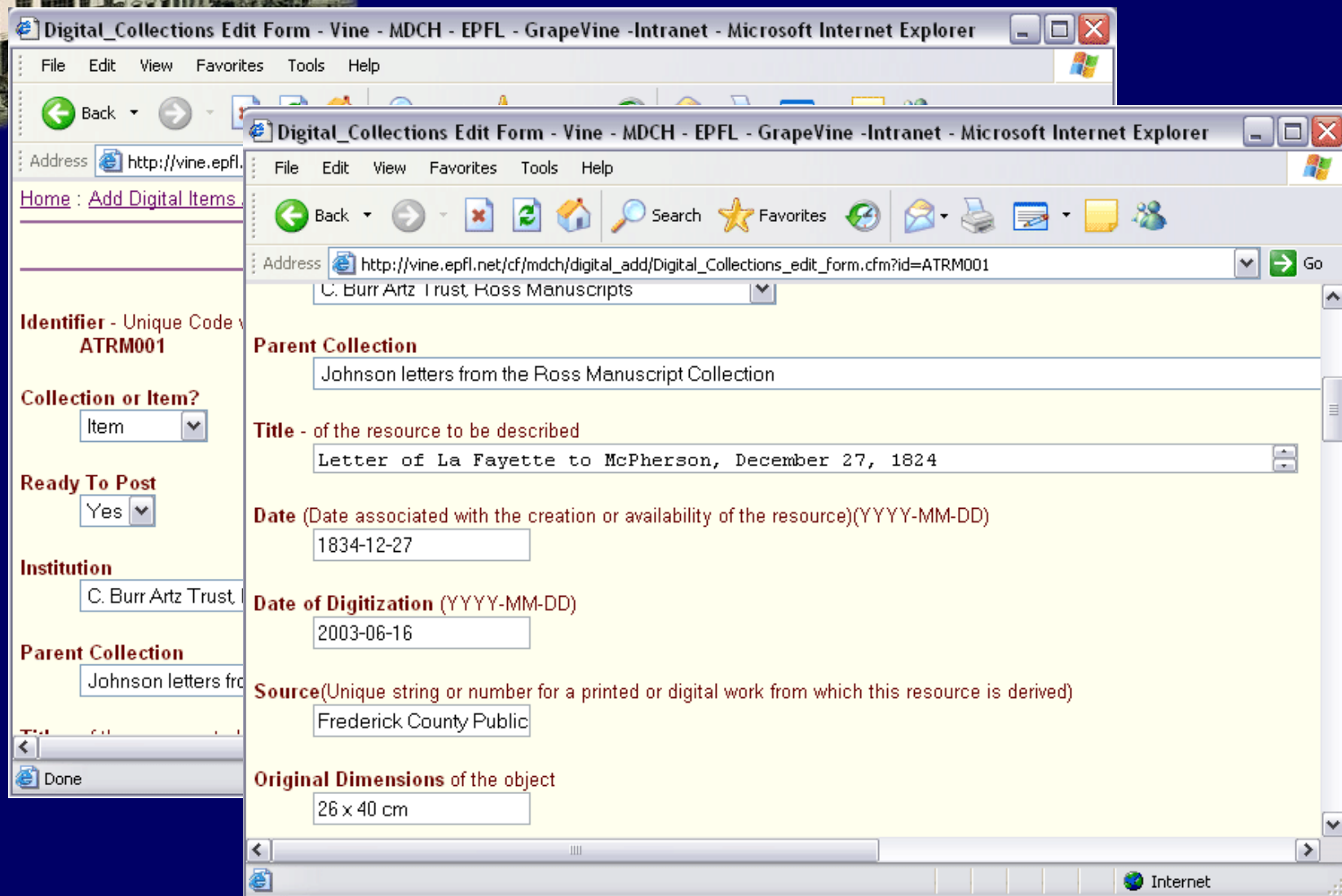
Why CONTENTdm?

Before & After



Data Entry Interface

:Before CONTENTdm



The screenshot shows a Microsoft Internet Explorer window titled "Digital_Collections Edit Form - Vine - MDCH - EPFL - GrapeVine -Intranet". The address bar shows the URL "http://vine.epfl.net/cf/mdch/digital_add/Digital_Collections_edit_form.cfm?id=ATRM001". The form contains several fields for data entry:

Identifier - Unique Code
ATRM001

Collection or Item?
Item

Ready To Post
Yes

Institution
C. Burr Artz Trust, Ross Manuscripts

Parent Collection
Johnson letters from the Ross Manuscript Collection

Title - of the resource to be described
Letter of La Fayette to McPherson, December 27, 1824

Date (Date associated with the creation or availability of the resource)(YYYY-MM-DD)
1834-12-27

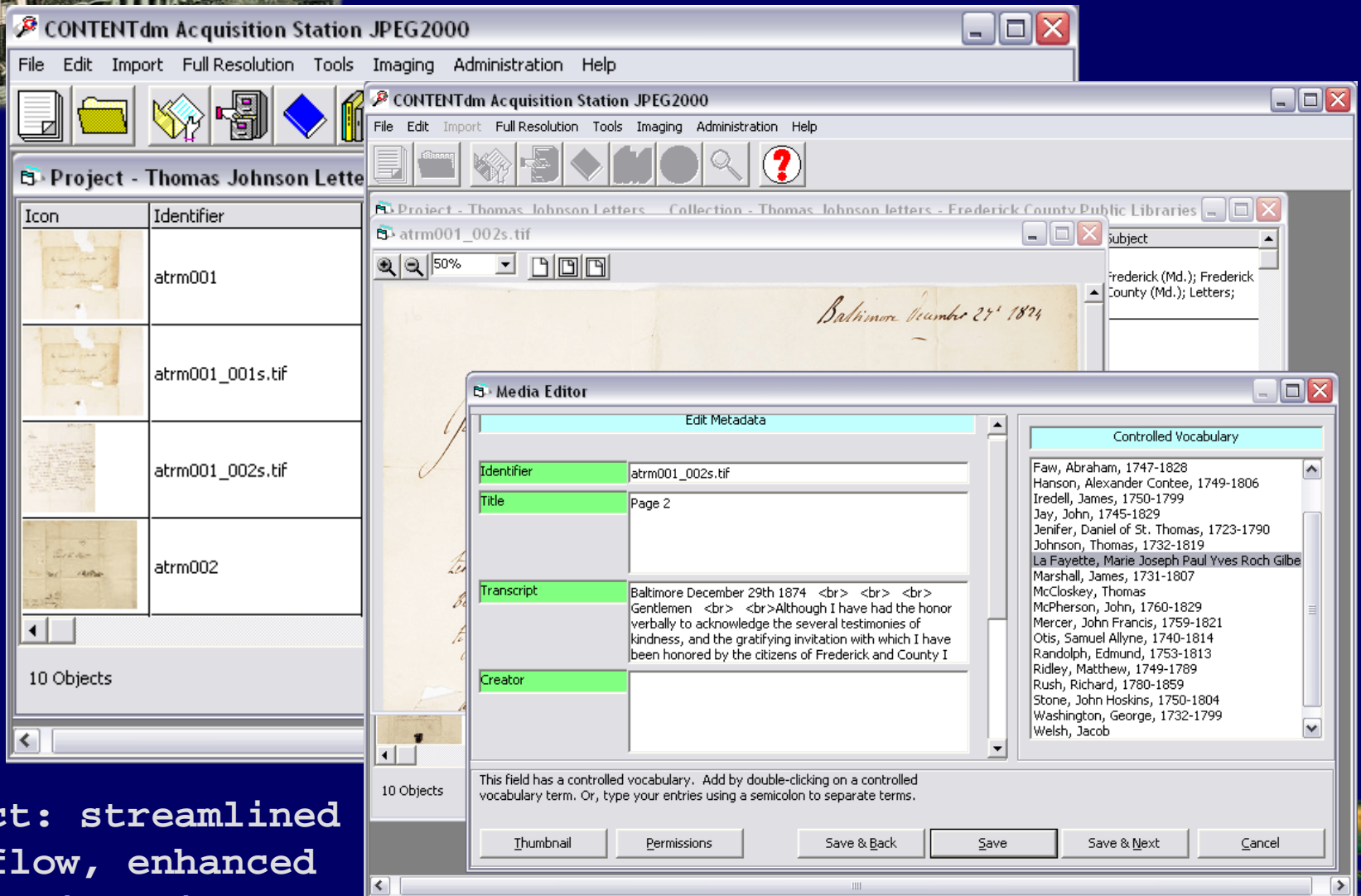
Date of Digitization (YYYY-MM-DD)
2003-06-16

Source(Unique string or number for a printed or digital work from which this resource is derived)
Frederick County Public

Original Dimensions of the object
26 x 40 cm

Data Entry Interface

:After CONTENTdm



Impact: streamlined
workflow, enhanced
user-friendliness

Data Entry Tools

:Before CONTENTdm



Data Entry Tools

:After CONTENTdm



Controlled Vocabulary

- Barrack, Peter
- Carroll, Daniel, 1730-1796
- Chase, Samuel, 1741-1811
- Faw, Abraham, 1747-1828
- Hanson, Alexander Contee, 1749-1806
- Iredell, James, 1750-1799
- Jay, John, 1745-1829

CONTENTdm Acquisition Station JPEG2000

File Edit Import Full Resolution Tools Imaging Admin

Project - Thomas Johnson Letters Collection - Thomas Johnson Letters

Icon	Creator	Subject
	La Fayette, Marie Joseph	Frederick (Md.);
	Paul Yves R...	Frederick (Md.);
	Motier, mar...	Frederick (Md.);
	1757-1834;	Frederick (Md.);

Project - Thomas Johnson Letters Collection - Thomas Johnson Letters

Icon	Publisher (Electronic)	Holding Institution	Date Original
	Enoch Pratt Free Library;	C. Burr Artz Public Library, Frederick County Public Libraries;	1834-12-27

Template Creator

Create a metadata template for all items you import. Click a field in the Default Properties column to choose a data type. Enter text or a directory in the Default Value column where appropriate.

Field Name	Default Properties	Default Value
Creator	Text	
Subject	Text	
Description	Text	
Publisher (Electronic)	Text	Enoch Pratt Free Library;
Holding Institution	Text	C. Burr Artz Public Library, Frederick County
Date Original	Text	

Impact: reduced staff time,
increased accuracy





Access Images

:Before CONTENTdm

Manually created
display images



Thumbnail
image



Reference
image



Full display
image



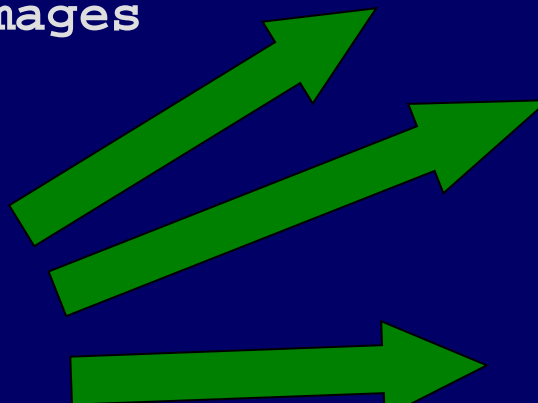


Access Images :After CONTENTdm

CONTENTdm-
generated
display images



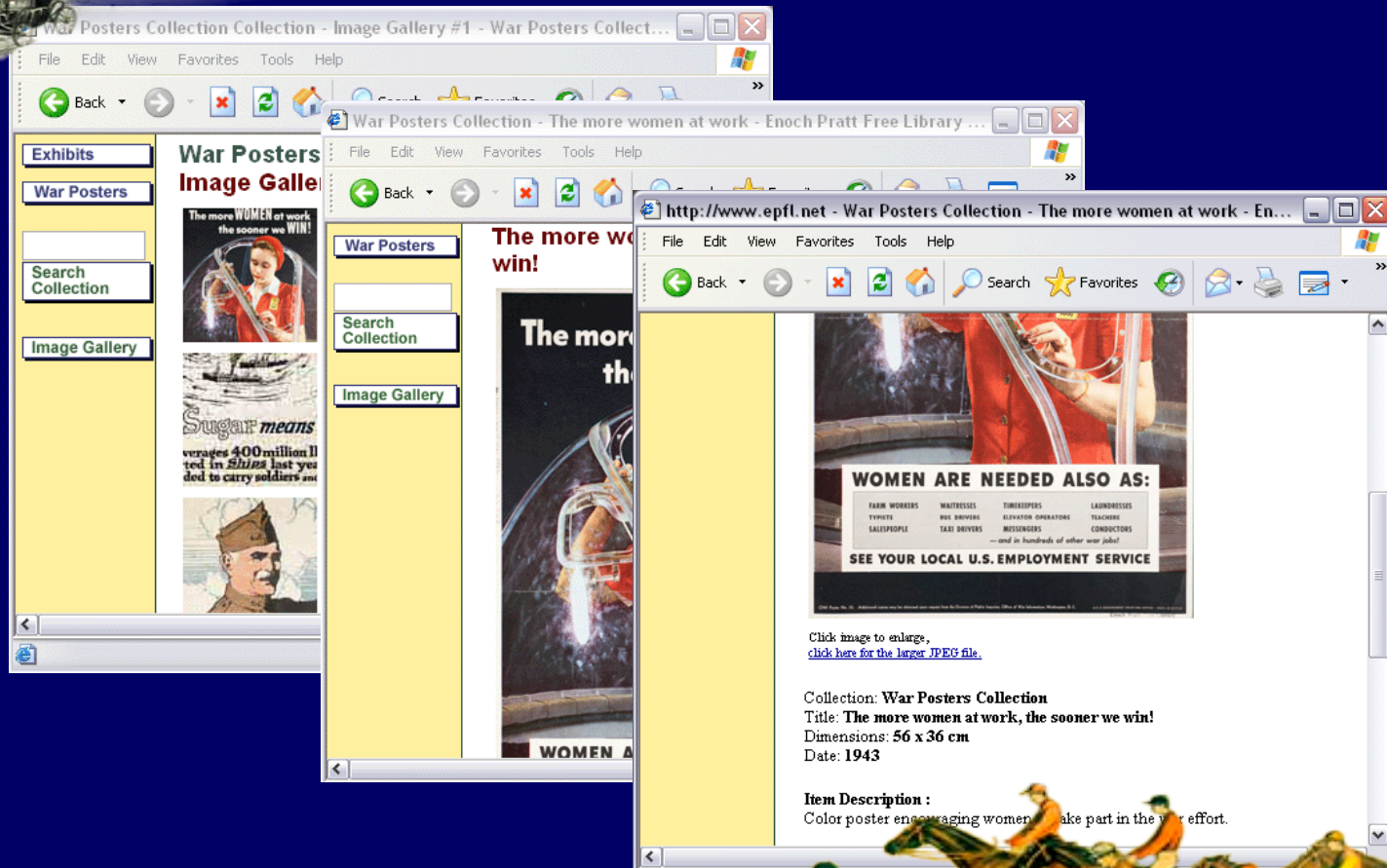
TIF image



Impact: reduced staff time,
streamlined workflow

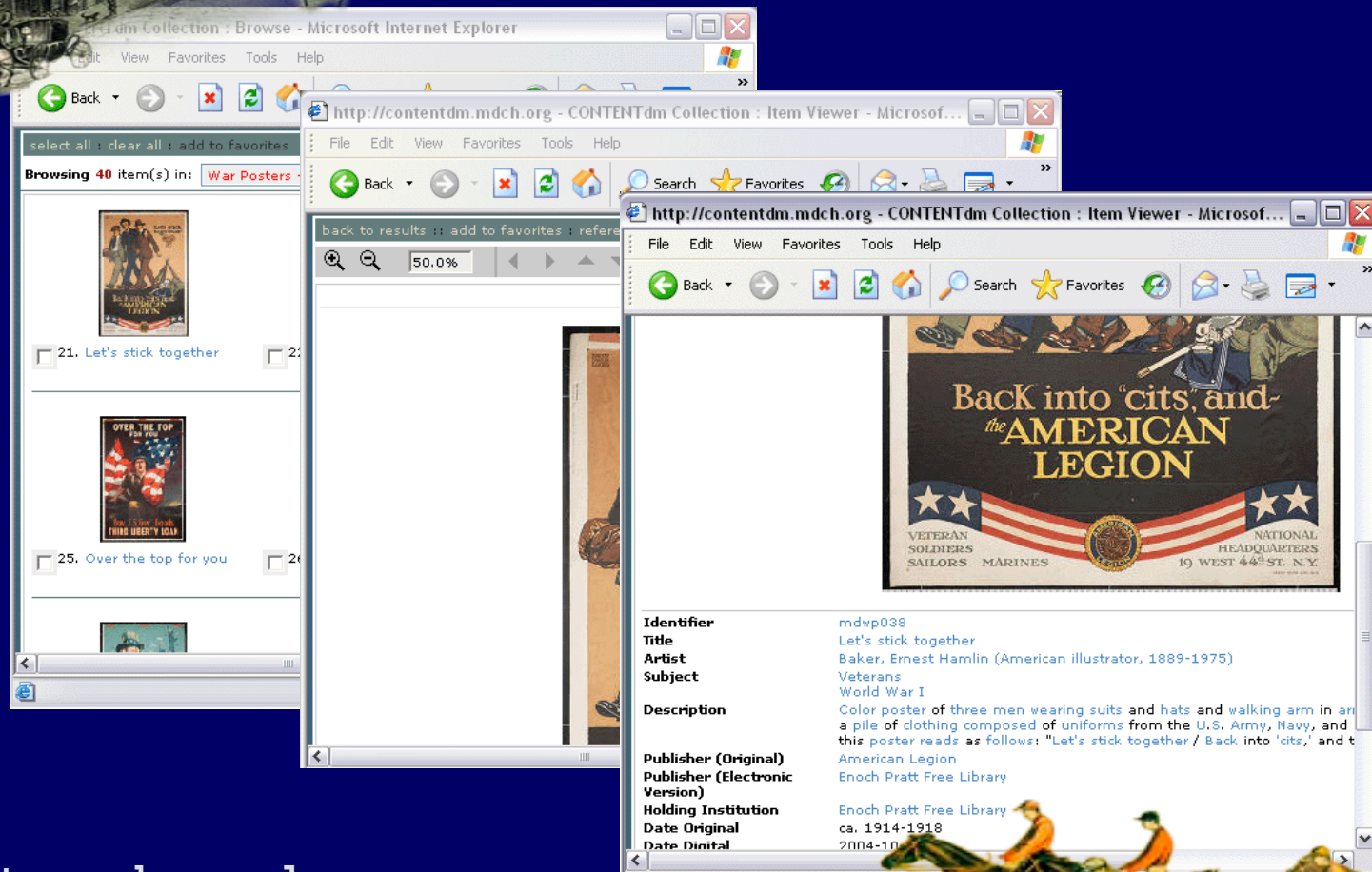


End-User Display :Before CONTENTdm



Gallery & Item Views

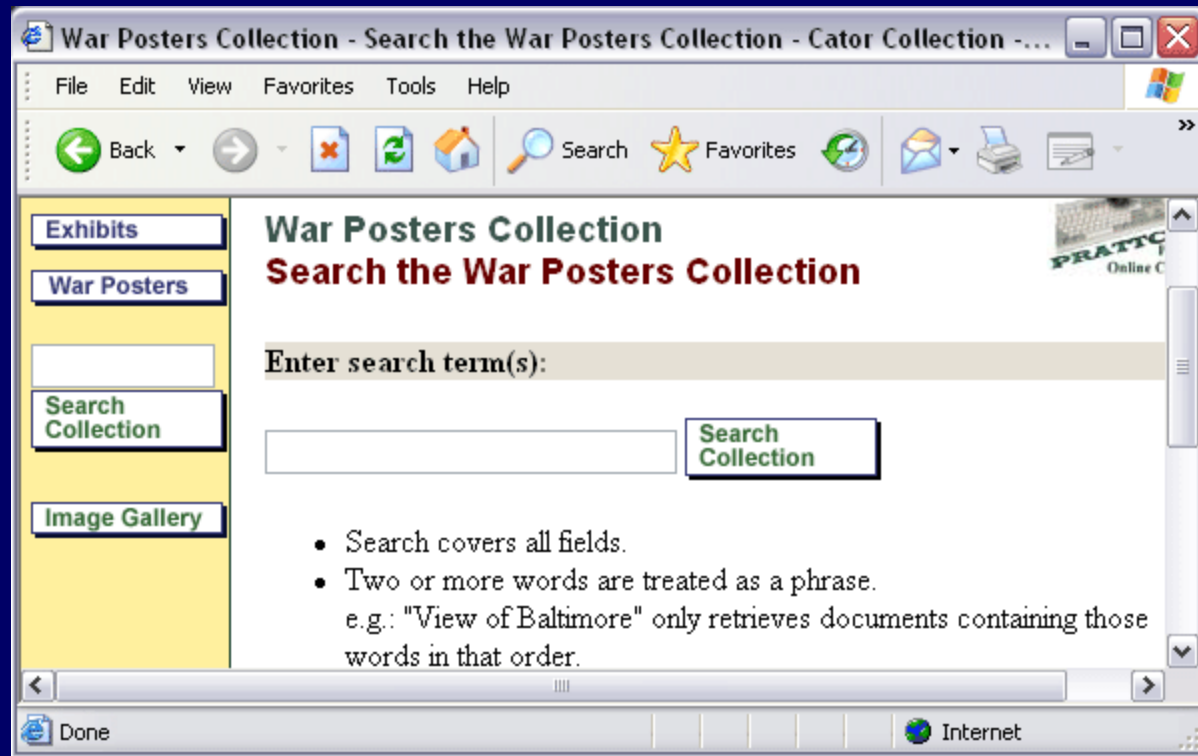
End-User Display :After CONTENTdm



Impact: enhanced user-
friendliness, decreased
technical curve

End-User Tools

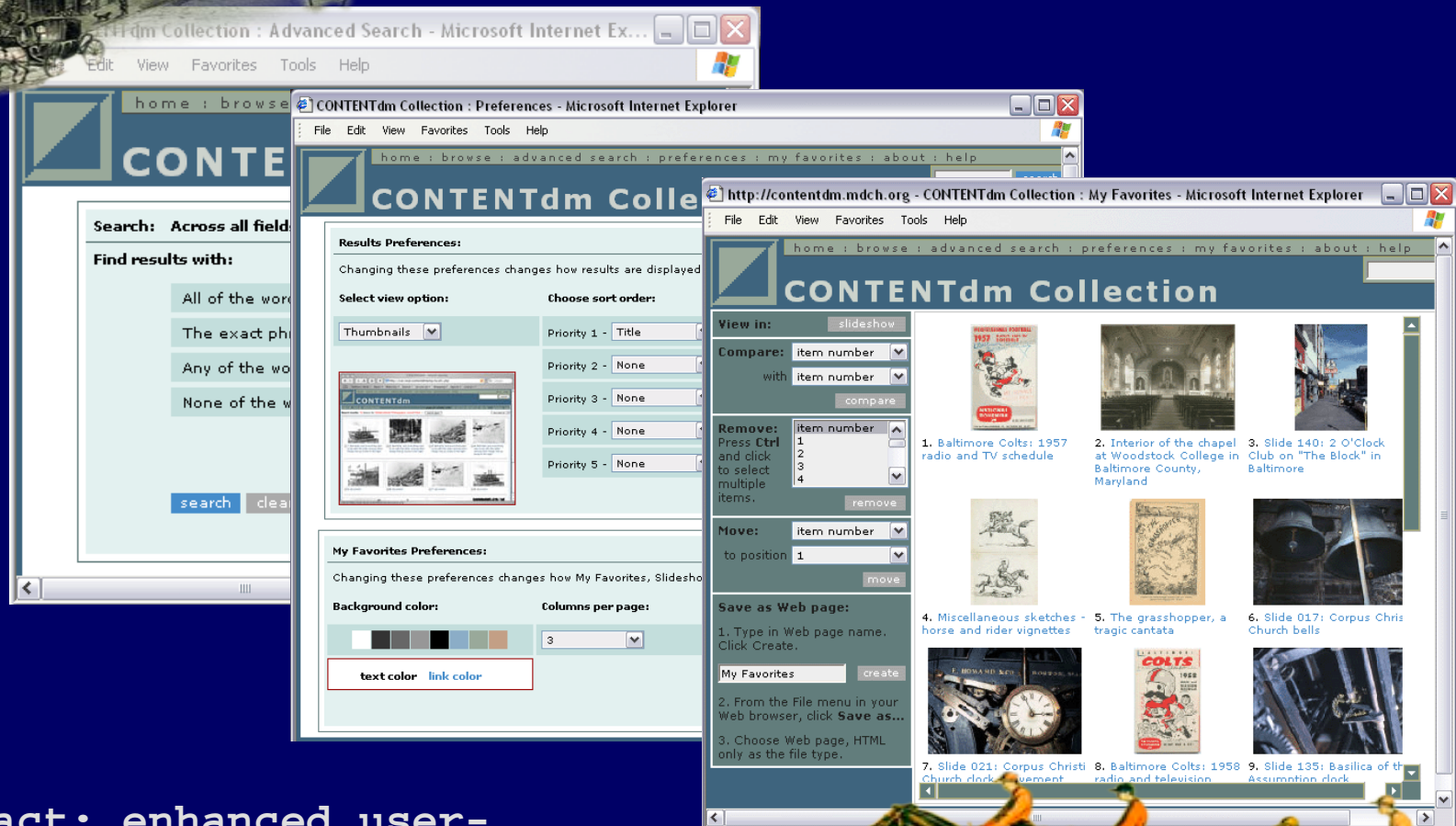
:Before CONTENTdm



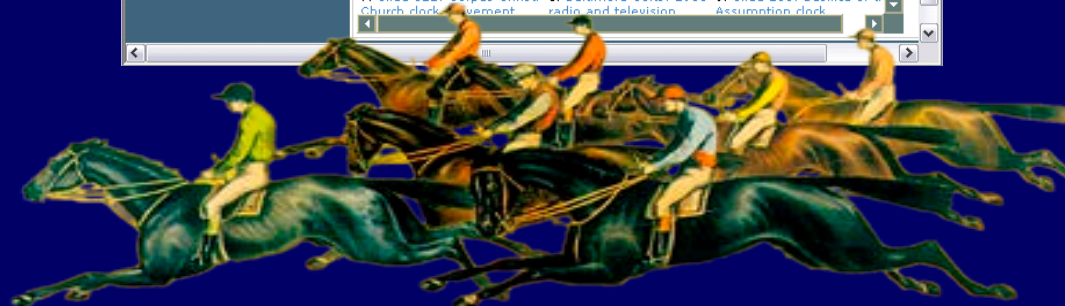
Searching Collections



End-User Tools :After CONTENTdm



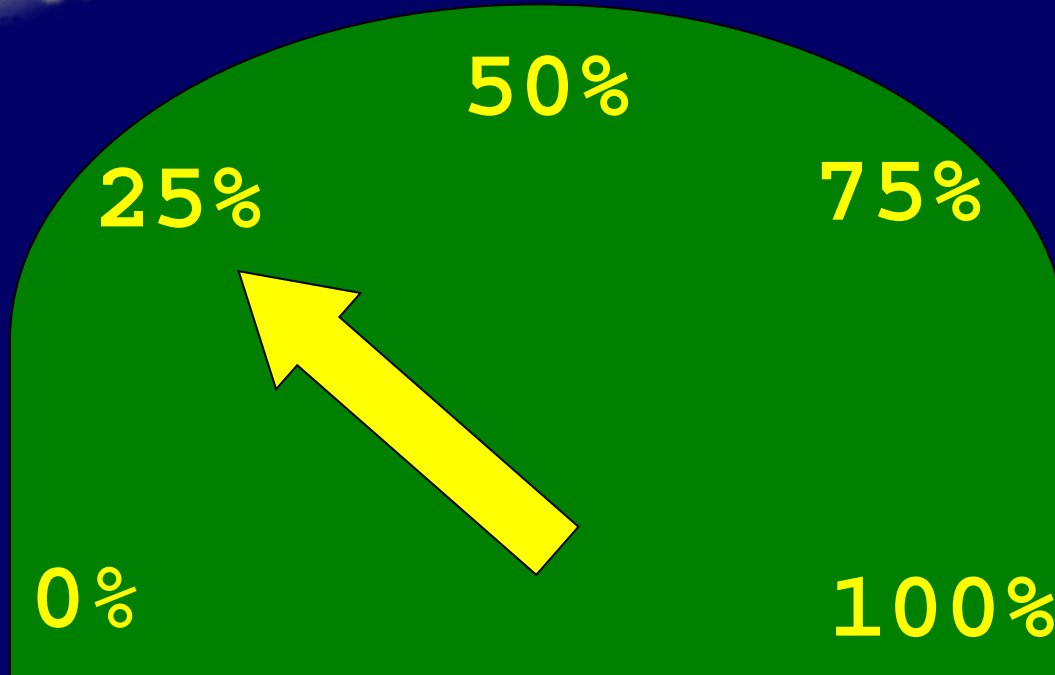
Impact: enhanced user-
friendliness, decreased
technical curve





Participant Enthusiasm

:Before CONTENTdm



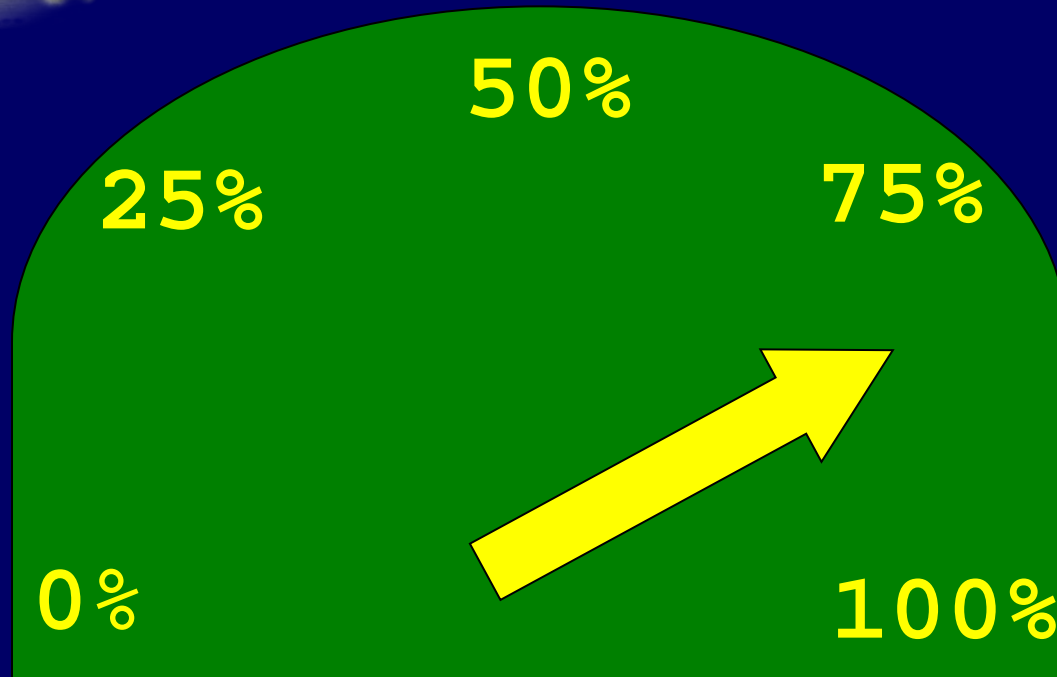
Enthusiasm Meter





Participant Enthusiasm

:After CONTENTdm



Enthusiasm Meter

Impact: increased
participation





Summary of Benefits

: Impact of CONTENTdm Use

- Streamlined Workflow
- Increased Accuracy
- Decreased Staff Time
- Decreased Technical Curve
- Enhanced User Friendliness
- Enhanced Sustainability
- Enthusiasm from Partners





Highlighted Collection

Maryland Library's Most Wanted





Highlighted Collection

:Maryland Library's Most Wanted

Maryland Library's MOST WANTED

© Enoch Pratt Free Library, Baltimore, Maryland

REWARD

A height chart with five figures standing against it. The figures are labeled 'Wanted images', 'Identified images', and 'Project credits'. The height chart has markings for 1920, 1930, 1940, 1950, 1960, and 1970.

1970
1960
1950
1940
1930
1920

Wanted images Identified images Project credits

Unidentified photographs





Customizations :Maryland Library's Most Wanted



Themed CONTENTdm
templates and home page





Customizations

:Maryland Library's Most Wanted

CQR

Predefined search
based on metadata
field



Custom Queries & Results



Customizations

:Maryland Library's Most Wanted

http://wanted.mdch.org - Maryland Library's Most Wanted : Item Viewer - Microsoft Internet Explorer

File Edit View Favorites Tools Help

Can you help us identify this item?

Your name:

May we list your name as a Master Sleuth on our website?

☐ Yes ☐ No, list as anonymous

Your location (City, State):

How can we get in touch with you (e-mail address):

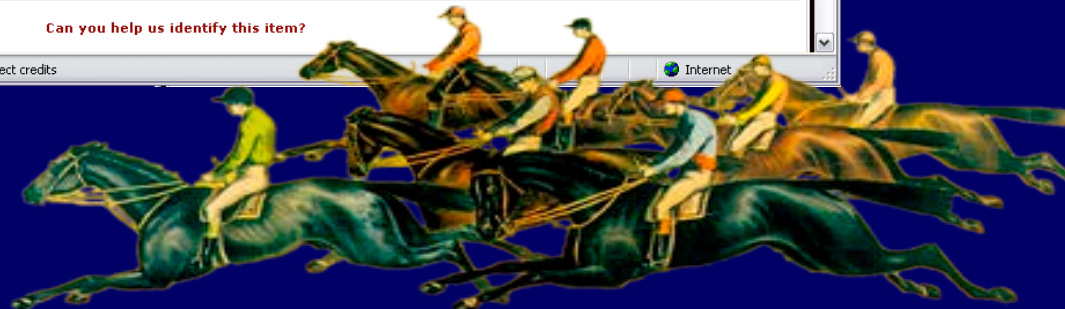
What can you tell us about this image?

Do you know of a source (issue of a newspaper or confirm the information you have provided?)

Welcome to Maryland Library's Most Wanted



E-mail form





Highlighted Collection

:Maryland Library's Most Wanted

Response

Over 80 e-mails received

15 photographs identified

National publicity





Looking Ahead

Where We Go From Here





Looking Ahead :Technical Infrastructure



WHILBR
(legacy database)



CONTENTdm #1
EPFL/SLRC



Legacy
database,
prospective
CONTENTdm #2



Hosted digital
collections

CONTENTdm =
Technical
Infrastructure,
Potential for
Multi-Site
Server





The End
:MDCH Use of CONTENTdm

Questions?

Nadia Nasr
nnasr@prattlibrary.org
410-545-6342

