

10-21-2010

# History of Towson University – how things change and stay the same

Nadia Nasr

*Santa Clara University*, [nnasr@scu.edu](mailto:nnasr@scu.edu)

Felicity Knox

Follow this and additional works at: <http://scholarcommons.scu.edu/library>



Part of the [Library and Information Science Commons](#)

---

## Recommended Citation

Nasr, Nadia and Knox, Felicity, "History of Towson University – how things change and stay the same" (2010). *University Library*. Paper 121.

<http://scholarcommons.scu.edu/library/121>

Presentation given at the Towson University Staff Council (TUSC) 2010 Staff Development Day event "Back to the Future," Towson University, Towson, MD.

This Presentation is brought to you for free and open access by the Information Services at Scholar Commons. It has been accepted for inclusion in University Library by an authorized administrator of Scholar Commons. For more information, please contact [rscroggin@scu.edu](mailto:rscroggin@scu.edu).

# HISTORY OF TOWSON UNIVERSITY

NEW EMPLOYEE ORIENTATION  
GIVEN ALTERNATE 3<sup>RD</sup> FRIDAY OF  
THE MONTH BETWEEN FEBRUARY  
2008 AND JUNE 2012

# MARYLAND STATE NORMAL SCHOOL (MSNS) ERA

1866-1935



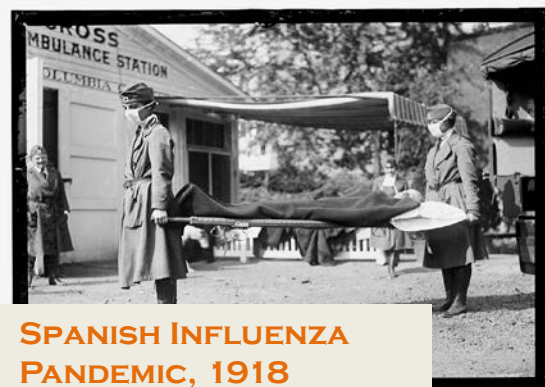
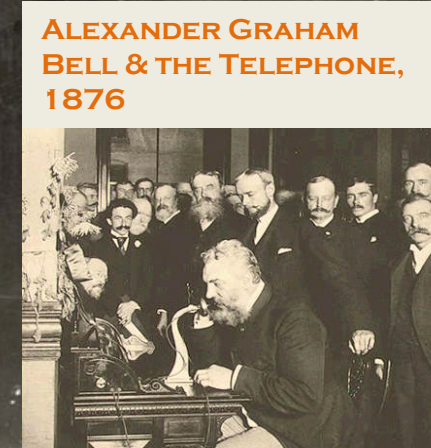
**U.S. CIVIL WAR,  
1861-1865**



**GREAT BALTIMORE  
FIRE, 1904**



**ALEXANDER GRAHAM  
BELL & THE TELEPHONE,  
1876**



**SPANISH INFLUENZA  
PANDEMIC, 1918**



**WOMEN'S RIGHT TO VOTE,  
1920**



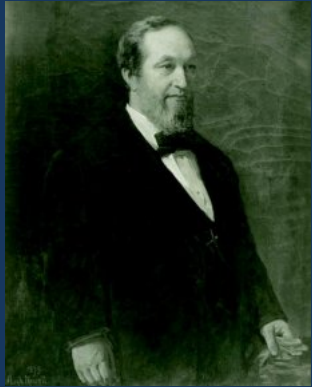
**THE GREAT DEPRESSION ,  
1929-1933**

**THE GREAT DEPRESSION ,  
1929-1933**

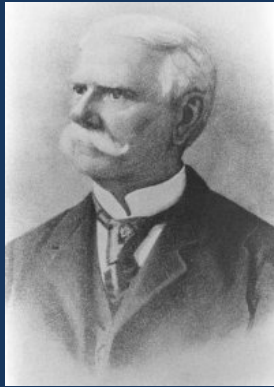
**WORLD WAR ONE,  
1914-1918**



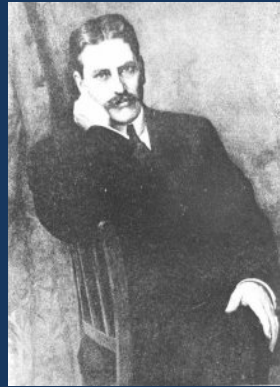
# MSNS PRINCIPALS



M.A. Newell  
1866-1890



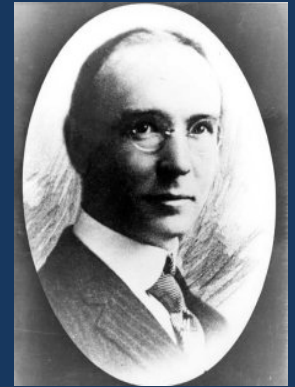
E.B. Prettyman  
1890-1905



George W. Ward  
1905-1909



Sarah E. Richmond  
1909-1917



Henry S. West  
1917-1920



Lida Lee Tall  
1920-1935



# MSNS ACADEMIC PROGRAM

## Sessions, Vacations, &c.

The Fall Session will commence on *Monday, September 17*, and end on the *20th of December*. The Winter Session will commence *Monday, January 7th*, and end on the *5th of April*. There will be a Summer Session (of the Preparatory Class only) commencing *April 8th*, and ending *June 28th*.

## 1866: 1-YEAR DIPLOMA

## PROFESSIONAL CERTIFICATE

## BACHELOR'S DEGREE

Maryland State Teachers' College at Towson 19

### SUGGESTED PROGRAM FOR FOUR-YEAR COURSE

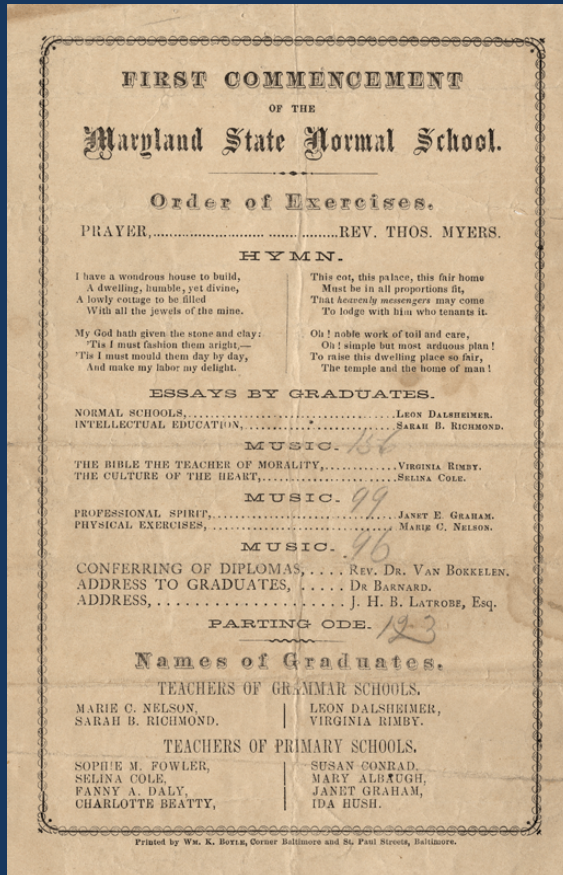
First Year			
SEMESTER I		SEMESTER II	
	Hrs. Wks. Cr.		Hrs. Wks. Cr.
Art 101.....	3 18 3	Art 102.....	3 18 3
Music 101.....	3 18 3	Education 101.....	3 18 2
English 101.....	3 18 3	English 103.....	3 18 3
Geography 101.....	3 18 3	Geography 102.....	3 18 3
History 101.....	3 18 3	Music 102.....	2 18 2
Health 101.....	3 18 3	Physical Ed. 102.....	2 18 1
Physical Ed. 101.....	2 18 1	Penmanship 100.....	2 18 1
Psychology 111.....	1 18 1		
Science 101.....	3 18 3		
Chorus.....	1 18 3		
	19 18 17		
Second Year			
SEMESTER I		SEMESTER II	
	Hrs. Wks. Cr.		Hrs. Wks. Cr.
English 201.....	2 18 2	Art 301.....	2 18 1½
Geography 201, 202.....	3 18 3	English 203.....	3 18 3
History 102.....	3 18 3	English 205.....	2 18 2
Mathematics 201.....	3 18 3	Health 202.....	2 18 2
Physical Ed. 201.....	2 18 1	History 201, 202.....	3 18 3
Science 202.....	5 18 4	Physical Ed. 202.....	2 18 1
	18 16	Physical Ed. 311.....	2 18 2
		Psychology 221.....	2 18 2
			18 16½
Third Year			
SEMESTER I		SEMESTER II	
	1st 9 Wks. 2nd 9 Wks. Cr.		1st 9 Wks. 2nd 9 Wks. Cr.
Education 211.....	2 2 2	Ed. 303—Student	25 8
Education 331.....	3 3 3	Teaching.....	3 1½
English 303.....	4 2	Education 341.....	3 1½
*History 301.....	3 1½	English 406.....	3 1½
Mathematics 301.....	4 2	Geography 301.....	3 1½
Music 201.....	3 1½	Music 301.....	3 1½
Physical Ed. 301.....	2 2 1	Physical Ed. 302.....	2 1½
Science 302.....	4 4 3	Psychology 321.....	2 1
	18 18 16		25 16 15½
Fourth Year			
SEMESTER I		SEMESTER II	
	1st 9 Wks. 2nd 9 Wks. Cr.		1st 9 Wks. 2nd 9 Wks. Cr.
Art 401.....	4 1½	Art 402.....	2 2 1½
*Geography 302.....	3 1½	Economics 302.....	3 3 3
History 302.....	3 1½	Education 332.....	3 1½
Music 401.....	3 1½	English 401, 402.....	4 4 4
Physical Ed. 401.....	2 1½	Geography 401.....	3 1½
Psychology 421.....	2 1	Health 303.....	2 2 2
Ed. 401—Student		History 401.....	3 1½
Teaching.....	25 8	Music 402.....	3 1½
	17 25 15½	Physical Ed. 402.....	2 2 1
			19 19 17½
Total Semester Hours.....		128	

\*Unit courses.

## 1935: 4-YEAR B.S.



# MSNS ENROLLMENT



1935: 371 STUDENTS

1866: 11 GRADS

3,400% INCREASE  
OVER 69 YEARS



# MSNS CAMPUSES



1<sup>ST</sup> LOCATION  
RED MEN'S HALL  
1866-1872



2<sup>ND</sup> LOCATION  
ATHENAEUM CLUB  
1872-1875



3<sup>RD</sup> LOCATION:  
CARROLLTON BUILDING  
1876-1915



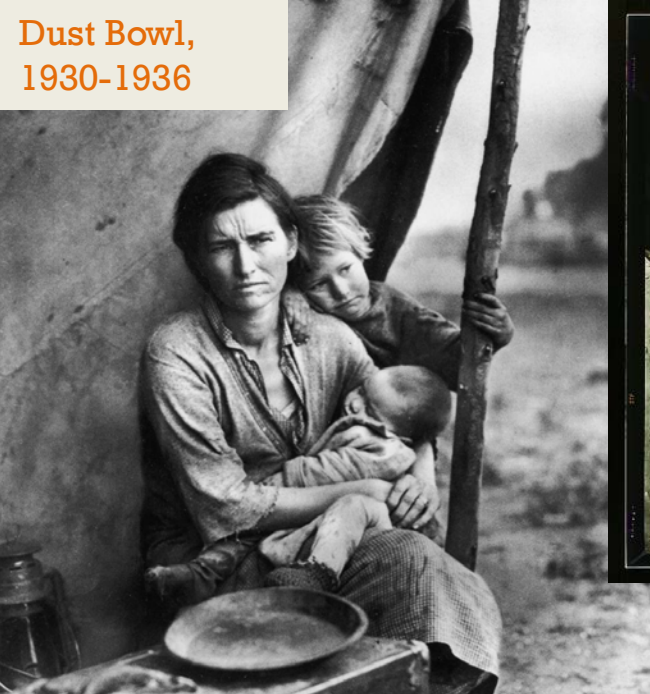
4<sup>TH</sup> LOCATION:  
TOWSON CAMPUS  
1915-PRESENT

# STATE TEACHERS COLLEGE ERA

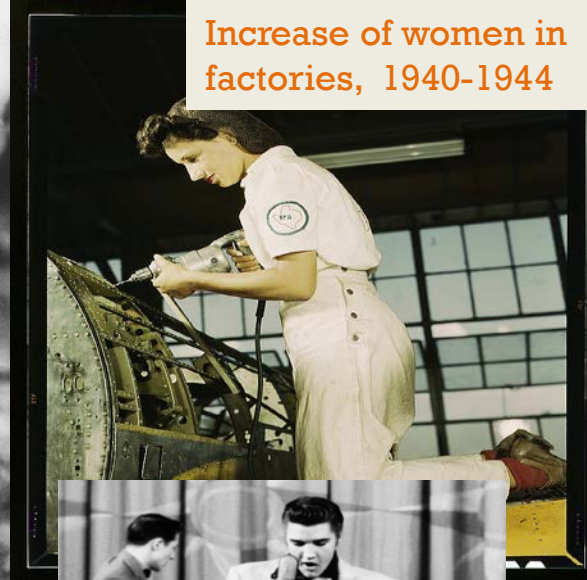
1935-1963



Dust Bowl,  
1930-1936



Increase of women in  
factories, 1940-1944



Housing Boom, 1945-1960



Elvis Presley on Ed Sullivan,  
1956



World War Two, 1939-1945



Little Rock Nine, 1957



# STC PRESIDENTS



Lida Lee Tall  
1935-1938



M. Theresa Wiedefeld  
1938-1947



Earle T. Hawkins  
1947-1963



# STC ACADEMIC PROGRAM

Maryland State Teachers' College at Towson 19

SUGGESTED PROGRAM FOR FOUR-YEAR COURSE

First Year			
SEMESTER I		SEMESTER II	
Art 101	Mrs. Wks. Cr.	Art 102	Mrs. Wks. Cr.
Art 101	3 18 3	Art 102	4 18 3
Music 101	3 18 3	Education 101	3 18 2
English 101	3 18 3	English 103	3 18 3
Geography 101	3 18 3	Geography 102	3 18 3
History 101	3 18 3	Music 102	2 18 2
Health 101	3 18 3	Physical Ed. 102	2 18 1
Physical Ed. 101	2 18 1	Penmanship 100	2 18
Psychology 111	1 18 1		
Science 101	3 18 3		
Chorus	1 18		
	19 18 17		20 14

Second Year			
SEMESTER I		SEMESTER II	
English 201	Mrs. Wks. Cr.	Art 201	Mrs. Wks. Cr.
English 201	2 18 2	Art 201	2 18 1½
Geography 201, 202	3 18 3	English 203	3 18 3
History 102	3 18 3	English 205	2 18 2
Mathematics 201	3 18 3	Health 202	2 18 2
Physical Ed. 201	2 18 1	History 201, 202	3 18 3
Science 202	5 18 4	Physical Ed. 202	2 18 1
	18 16	Physical Ed. 311	2 18 2
		Psychology 221	2 18 2
			18 16½

Third Year			
SEMESTER I		SEMESTER II	
Education 211	1st 9 Wks. 2nd 9 Wks. Cr.	Ed. 303—Student	1st 9 Wks. 2nd 9 Wks. Cr.
Education 211	2 2 2	Ed. 303—Student	25 8
Education 301	3 3 3	Teaching	3 1½
English 303	4 2	Education 341	3 1½
*History 301	3 1½	English 406	3 1½
Mathematics 301	4 2	Geography 301	3 1½
Music 201	3 1½	Music 301	3 1½
Physical Ed. 301	2 2 1	Physical Ed. 302	2 1½
Science 302	4 4 3	Psychology 321	2 1
	18 18 16		25 16 15½

Fourth Year			
SEMESTER I		SEMESTER II	
Art 401	1st 9 Wks. 2nd 9 Wks. Cr.	Art 402	1st 9 Wks. 2nd 9 Wks. Cr.
Art 401	4 1½	Art 402	2 2 1½
*Geography 302	3 1½	Economics 302	3 3 3
History 302	3 1½	Education 322	3 1½
Music 401	3 1½	English 401, 402	4 4 4
Physical Ed. 401	2 1½	Geography 401	3 1½
Psychology 421	2 1	Health 303	2 2
Ed. 404—Student	3 1	History 401	3 1½
Teaching	25 8	Music 402	3 1½
	17 25 15½	Physical Ed. 402	2 2 1
			19 19 17½

Total Semester Hours.....128

\*Unit courses.

1935: 4-YEAR B.S.

1943: ACCELERATED PROGRAM

1946: JUNIOR COLLEGE PROGRAM

1958: GRADUATE SCHOOL OFFERS M.ED.

1963: B.A. DEGREE ADDED, LIBERAL ARTS COURSE OF STUDY



# STC ENROLLMENT



1935: 371 STUDENTS

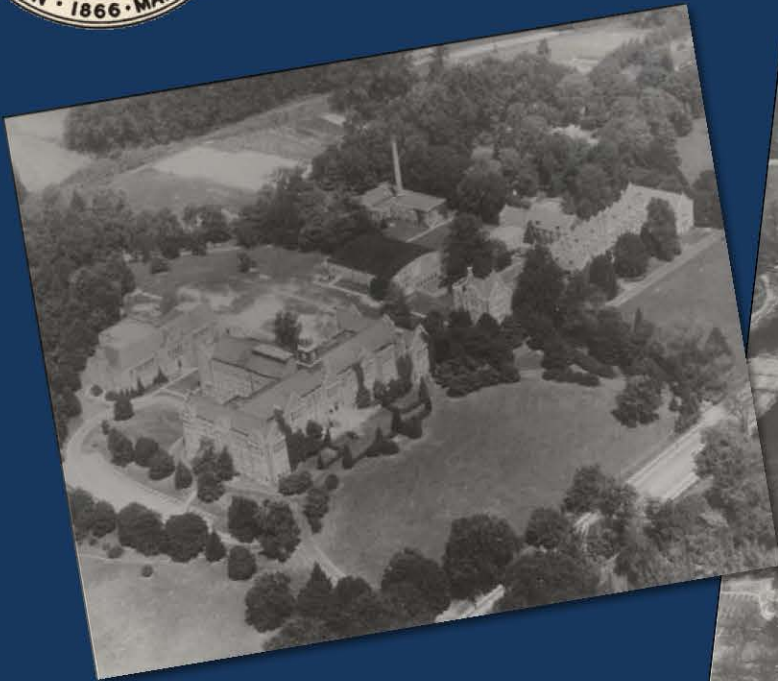


1963: 1747 STUDENTS

400% INCREASE  
OVER 28 YEARS



# STC CAMPUS



9 NEW BUILDINGS: WIEDEFELD GYMNASIUM, WARD & WEST, 1<sup>ST</sup> ALBERT S. COOK LIBRARY, PRETTYMAN, ADMINISTRATION, LIDA LEE TALL SCHOOL, 7800 YORK RD., DOWELL HEALTH CENTER

# TOWSON STATE COLLEGE (TSC) ERA 1963-1976



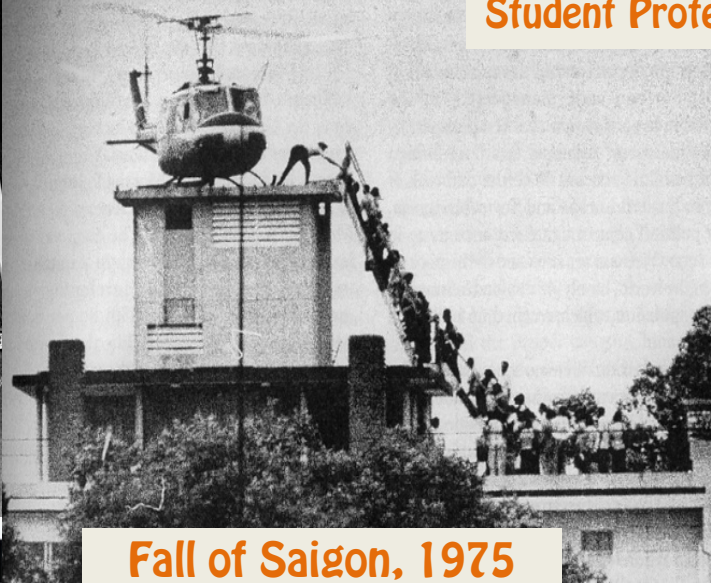
**Martin Luther King Jr.  
Assassinated, 1968**



**Nineteen students arrested  
in Linthicum Hall takeover**

by Mike Dilworth and crowd concerning the use of the

**Student Protests, 1970s**



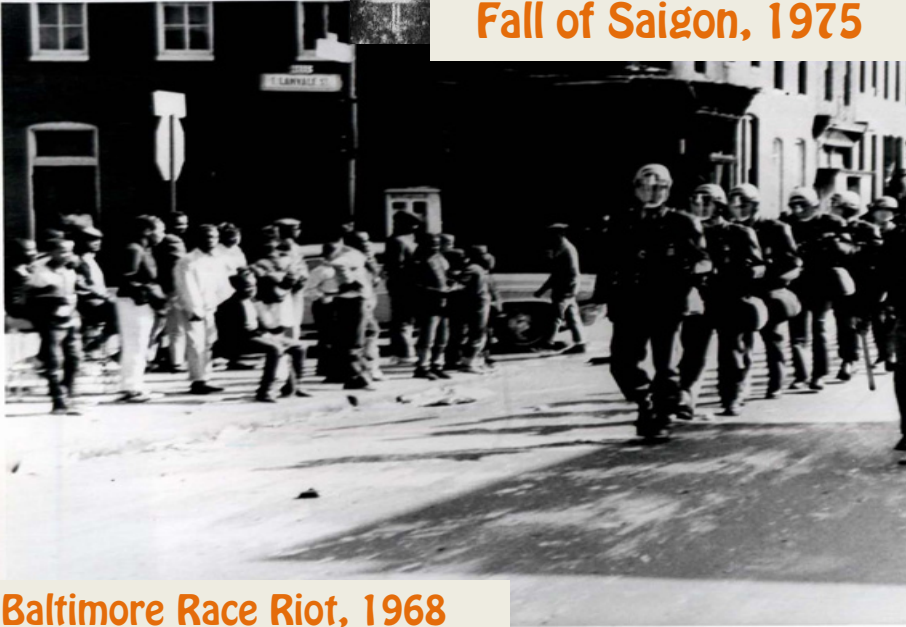
...the demonstrators to give up the building. He said that if they would not submit to campus officers, the Baltimore County Police would be called in.

This statement was answered with peering laughter. Dawson approached the entrance with a cutting tool after seeing his way through the crowd. The chains on the doors were cut and security officers entered the building apprehending the occupants. Twelve persons submitted peacefully to arrest.



**Assassinations of John F. Kennedy, 1963,  
and Robert F. Kennedy, 1968**

**Fall of Saigon, 1975**



**Baltimore Race Riot, 1968**

**The Beatles, 1960-1970**



**1970s Energy Crisis**



# TSC PRESIDENTS



Earle T. Hawkins  
1963-1969



James L. Fisher  
1969-1976



# TSC ACADEMIC PROGRAM

1971: ARTS & SCIENCES PROGRAM  
AT UNDERGRADUATE LEVEL



1974: TSC AWARDS FIRST  
B.S. IN NURSING



1963: LIBERAL ARTS  
COLLEGE AND TEACHER ED.

TSC EXPANDS OFFERINGS IN  
ARTS & SCIENCES, MAINTAINS  
STRONG TEACHER  
EDUCATION PROGRAM



# TSC ENROLLMENT



1963: 1,747 STUDENTS

940% INCREASE  
OVER 13 YEARS

1976: 16,427 STUDENTS  
(INCL. EVENING STUDENTS AND GRADUATE  
STUDENTS)





# TSC CAMPUS



CAMPUS,  
CA. 1963



CAMPUS  
CONSTRUCTION



11 NEW BUILDINGS: SCARBOROUGH, SMITH, LINTHICUM, BURDICK, 2<sup>ND</sup> ALBERT S. COOK LIBRARY, GENERAL SERVICES, AUBURN HOUSE, ENROLLMENT SERVICES, RESIDENCE TOWER, UNIVERSITY UNION, CENTER FOR THE ARTS

# TOWSON STATE UNIVERSITY (TSU) ERA 1976-1997



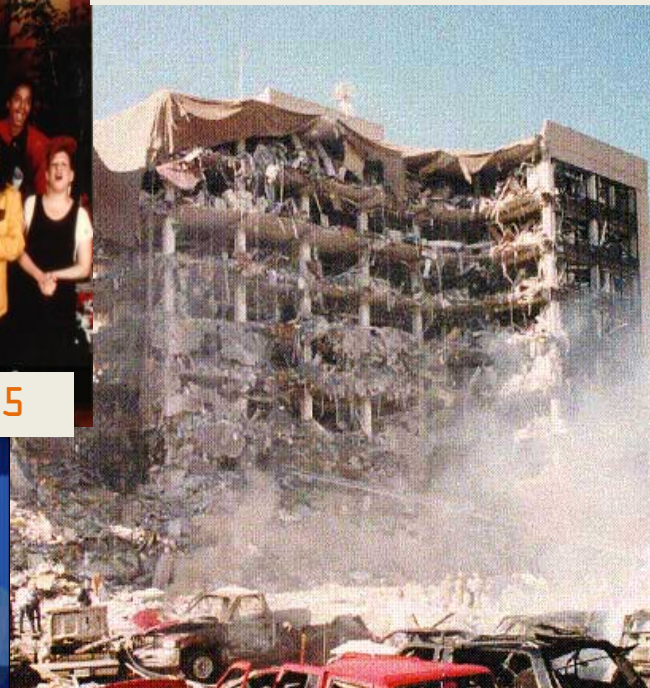


Iran Hostage Crisis,  
1979-1981



We Are the World, 1985

Oklahoma City Bombing,  
1995



Fall of the  
Berlin Wall, 1989



World Wide Web  
Publicly Debuts,  
1991

Los Angeles Race Riots,  
1992



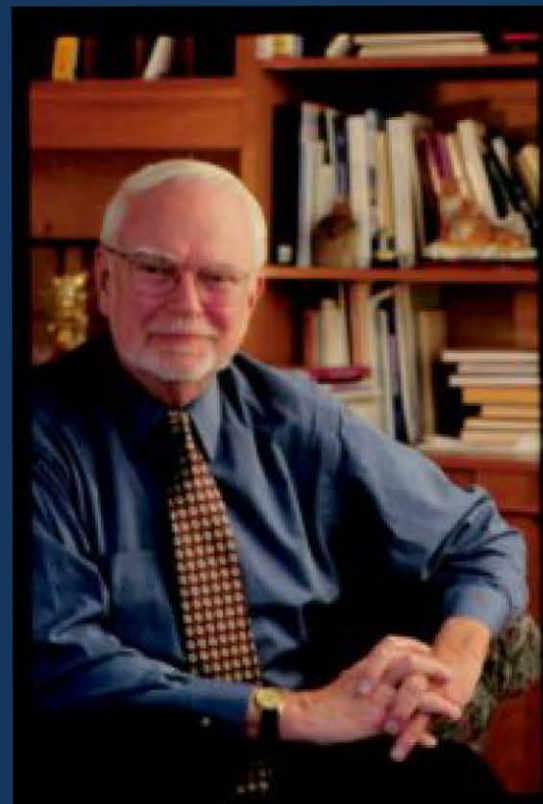
First U.S. Gulf War,  
1990-1991



# TSU PRESIDENTS



James L. Fisher  
1969-1976



Hoke L. Smith  
1976-1997



# TSU ACADEMIC PROGRAM

1976: TSC ACHIEVES  
UNIVERSITY STATUS



1981: ESTABLISHES SIX COLLEGES - ALLIED  
HEALTH AND PHYSICAL EDUCATION, EDUCATION,  
FINE ARTS AND COMMUNICATION, LIBERAL ARTS,  
NATURAL AND MATHEMATICAL SCIENCES; AND  
THE SCHOOL OF BUSINESS AND ECONOMICS



1988 - TSU BECOMES PART OF  
UNIVERSITY OF MARYLAND  
SYSTEM, NKA THE UNIVERSITY  
SYSTEM OF MARYLAND

**Governance to be restructured**

## Council approves reorganization

by Quincey R. Johnson

A task force report that proposes the reorganization of Towson State into six colleges has been passed by the Academic Council. The report also calls for a restructuring of the governance system.

The reorganization will combine departments that are academically related and have similar academic goals.

The report calls for a College of Liberal Arts and includes the following departments: English, geography and environmental planning, history, modern languages, philosophy and religion, political science, psychology, sociology and anthropology.

The College of Natural Sciences and Mathematics includes biology, chemistry, mathematics and computer science, and physics.

The School of Fine Arts and Communication includes art, music, dance, speech and mass communication, and theatre.

The School of Education and Instructional Technology includes early childhood education, elementary education, general education, instructional technology, Lida Lee Tall Learning Resources Center, and secondary education.

Business administration, accounting, and economics make up the School of Business and Economics.

Communication sciences and disorders, health science, health record administration, medical technology, nursing, occupational therapy, and physical education make up the School of Health Professions and Physical Education.

There is also a College of Continuing Studies and a Graduate School.

The report also outlines a design for a new governance structure. Exact details of academic governance have not yet been defined by the Academic Council.

The University-wide governing body will be called the University Senate.

The University Senate will be made up of representatives from each of the six colleges and schools, president of the Faculty Association ex-officio members, and a student representative from the SGA.

The University Senate will be in charge of admission standards, academic standards, curriculum, promotion and tenure policy, the academic calendar, faculty standards, library, long-range planning, athletics, retrenchment policy, and program development.

Within each college school the governing body will be called the College/School Assembly or Council. The assembly will be presided over by an elected faculty member or the dean of the college. The Assembly will have representation from each department.

The structure and procedures may vary with the size and complexity of the college.

Each department within the college will have its own governing body. Its jurisdiction will be over areas that affect the department only.

The change in the University's divisional academic structure was sparked by the Middle States' Evaluation in 1978.

Evaluators said they did not understand the system, and it was an awkward grouping of departments.

Joseph Cox, former vice president of academic affairs, said that the divisional system evolved from necessity rather than any set plan.

In 1969, Cox explained, former Dean Kenneth Shaw was responsible for all departments on campus. However, Shaw found it necessary to divide his duties with his associate dean.

Eventually, each of the five divisions was under the jurisdiction of a dean.

President Hoke Smith cited four main advantages to the reorganization. First, external visibility for the students and the business world, which makes the school better to incoming students.

Second, there is more immediate interaction among professional faculty in control of the professional school curriculum.

Third, the proposed structure tends to have more status in applying for federal grants.

Finally, reorganization would provide more compact, contiguous administration of the academic portion of the University.

TSU EXPANDS OFFERINGS AT THE  
MASTER'S LEVEL: OCCUPATIONAL  
THERAPY, PROFESSIONAL WRITING,  
COMPUTER SCIENCE, THEATER  
ARTS



# TSU CAMPUS

CAMPUS AT THE  
TURN OF THE NEW  
MILLENNIUM



CAMPUS  
CONSTRUCTION



12 NEW STRUCTURES: HAWKINS, LECTURE, MINNEGAN STADIUM,  
PSYCHOLOGY, TOWSON CENTER, GLEN COMPLEX, GLEN DINING, UNION  
GARAGE, STEPHENS ANNEX, BURKSHIRE APTS, TOWSON RUN



# TSU ENROLLMENT

1976: 16,427 STUDENTS

(INCL. EVENING STUDENTS AND  
GRADUATE STUDENTS)

1997: 15,544  
INCLUDING  
UNDERGRADUATES,  
GRADUATES, ETC.



5% DECREASE  
OVER 21 YEARS

# TOWSON UNIVERSITY (TU) ERA

1997-PRESENT





Lewinsky Scandal, 1995-1998



iPhone debuts, 2007



War in Afghanistan begins, 2001



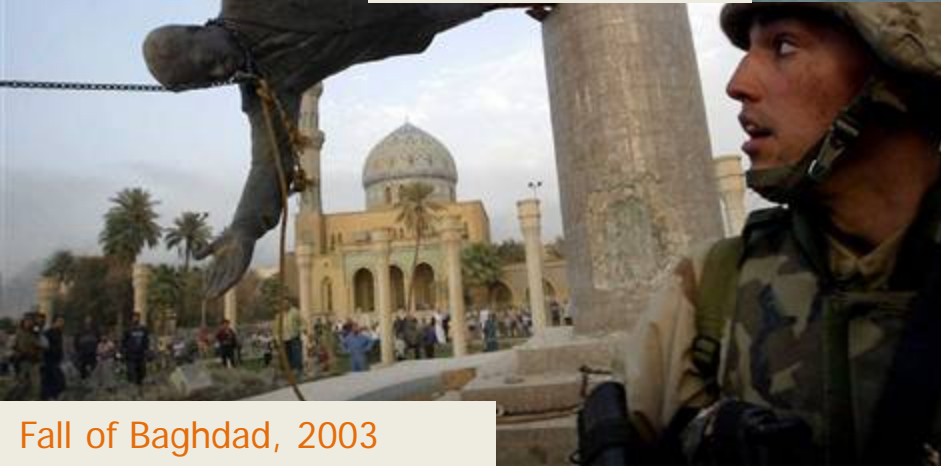
Web 2.0, 2003



September 11, 2001



Hurricane Katrina, 2005



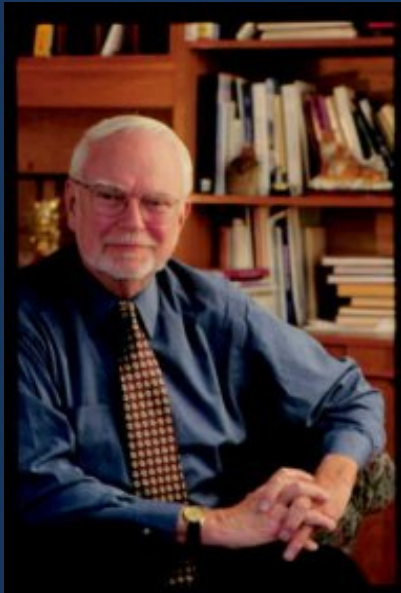
Fall of Baghdad, 2003



44.

Barack Obama 2009

# TU PRESIDENTS



Hoke L. Smith  
1997-2001



Mark L. Perkins  
2001-2002



Robert L. Caret  
2003-2011

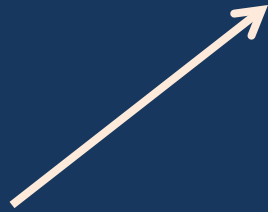


Maravene Loeschke  
2012-



# TU ACADEMIC PROGRAM

1997: 23 MASTER'S  
PROGRAMS, 40+  
UNDERGRADUATE  
MAJORS



2010\*: 5 DOCTORAL PROGRAMS,  
45 MASTER'S PROGRAMS, 63  
UNDERGRADUATE MAJORS;  
ADDS HONORS COLLEGE &  
GRAD SCHOOL BECOMES  
COLLEGE OF GRAD STUDIES

\* 2009: BHU  
BECOMES THE BHI  
AT TOWSON



TU BECOMES MARYLAND'S  
METROPOLITAN  
UNIVERSITY

# TU ENROLLMENT

1997: 15,544 INCLUDING  
UNDERGRADUATES,  
GRADUATES, ETC.



TODAY: 21,840 (FALL 2010)  
INCLUDING FT/PT  
UNDERGRAD AND GRAD

27% INCREASE  
OVER 13 YEARS

## CAMPUS AT THE TURN OF THE NEW MILLENNIUM



## CAMPUS GROWTH INTENSIFIES

13 NEW STRUCTURES: AUBURN PAVILION, MILLENNIUM HALL, SCHUERHOLZ BASEBALL COMPLEX, LANDSCAPE SERVICES, 7200 YORK RD., CHILDCARE CENTER, HARRIET TUBMAN HOUSE, WILLIAM PACA HOUSE, CLA 1, CLA 2, WEST VILLAGE, DOUGLASS DORM, BARTON DORM

# COMPREHENSIVE REVIEW

A LOT HAS CHANGED IN ALMOST 150 YEARS:

- LOCATION: 4 RELOCATIONS
- FOOTPRINT: FROM 80 TO 328 ACRES
- BUILDINGS: FROM 3 TO 44 STRUCTURES
- COURSE OFFERINGS: FROM TEACHER EDUCATION TO COMPREHENSIVE LIBERAL ARTS AND SCIENCES PROGRAM
- ENROLLMENT: FROM 11 TO 21,177, WITH A PROJECTED INCREASE IN 2016 TO 25,000
- DIVERSITY – FROM PRIMARILY MARYLAND STUDENTS TO STUDENTS FROM THE GEOGRAPHIC REGION AND INTERNATIONAL LOCATIONS

# COMPREHENSIVE REVIEW

A LOT HAS STAYED THE SAME:

- GROWTH
- CONSTRUCTION
- PARKING ISSUES
- STRONG FOCUS ON TEACHER EDUCATION
- EMPHASIS ON TEACHING AND APPLIED RESEARCH
- COMMUNITY CONNECTION LOCALLY, STATEWIDE,  
AND REGIONALLY